

OTR & BIAS TYRE
PROFESSIONAL MANUFACTURER

AULICE
HUBEI AULICE TYRE CO.,LTD.



HUBEI AULICE TYRE CO.,LTD.



Add: East New District, YangXin Industrial Zone, Hubei Province China.
Tel: +86-27-87775708
Mob: +86-13207128011 (Adora zhao)
Email: adorazhao@aulicetyre.com info@aulicetyre.com
Web: <http://www.aulicetyre.com>

HUBEI AULICE TYRE CO.,LTD.



COMPANY PROFILE

Hubei Aulice Tyre Co., Ltd. is a large leading tyre manufacturer established in 1998, which integrates scientific research, design, production, and sales of TBR,OTR ,and TBB tyres.

With the first established plant of all-steel radial truck tyre in 2012, AULICE strive to meet the growing demand in developing markets and ensure our customers enjoy high-quality tyres at reasonable prices. AULICE owns it's over 20 years experienced R&D team and research institute of formula, structure, technology. Powered by a large number of professional tyre technicians and senior engineers, it covered 94 sizes, 67 kinds of patterns, 17 R & D patents and 30 registered trademarks.

All of the products have obtained international approvals such as CCC, DOT, ECE, GCC, SNI, SGS ,SONCAP. Producing in compliance with the requirements of ISO9001:2000 and gaining recognition in broad markets.

Based on a production capacity of 6000 sets of all-steel radial tyre and 2500 sets of off-road tyre per day, Aulice keep increasing the market shares and sells branded tyre AULICE, VANLUSTONE, AOLAIISI, JIASHIBAO, SANTIAN, QUNYING to more than 30 provinces in the domestic market and over 30 overseas countries. In Oct 2019, Aulice invested another new plant in Xianning city, which designed to meet another 6000 sets of all-steel radial tyre per day.

In the future Aulice will strive to become the No.1 intelligent tyre manufacture using the internet+ concept with mega data technology and AI solution to build a smart and powerful tyre solution platform in the tyre industry. It will provide a very accurate solution to the end-users with different requirements in varies road conditions.





CORPORATE CULTURE

CORPORATE CULTURE

CORPORATE CULTURE



01 SERVICE POLICY

USERS WILL BE PROVIDED WITH HIGH-QUALITY PRODUCTS BY FIRST CLASS QUALITY MANAGEMENT AND EXCELLENT AFTER-SALES SERVICE PROCEDURES.

03 ENTERPRISE CORE VALUES

PASSIONATE
INNOVATIVE
RESPONSIBLE
COOPERATIVE
EXPERIENCED
INSIGHTFUL

SERVICE PURPOSE 02

CUSTOMER SATISFACTION IS OUR ONLY CRITERION.



PRODUCT CATALOGUE



- | | | | |
|---|---|--|--|
| 
L-5
(AE801) | 
E-4/L-4
(AE802) | 
E-3/L-3
(AE803) | 
NewE-3/L-3
(AE804) |
| 
E-3/G-3
(AE805) | 
E-7
(AE806) | 
E-3/L-3
(AE807) | 
E-3/L-3
(AE808) |
| 
E-3/L-3
(AE905) | 
E-3/L-3
(AE906) | 
E-3/L-3
(AE907) | 
E-3/L-3
(AE908) |
| 
E-3/L-3
(AE909) | 
E-3/L-3
(AE803) | 
E-3
(AE804) | 
E-3/L-3
(AE805) |
| 
E-3/L-3
(AE830) | 
E-3/L-3
(AE838) | 
AL702 | 
C-1
(AC601) |



- | | | | |
|--|---|--|--|
| 
AB210 | 
AB311 | 
AB2101 | 
AB411 |
| 
AB514 | 
AB521 | 
AB522 | 
AB533 |
| 
AB612 | 
AB614 | 
AB616 | 
AB618 |
| 
AB631 | 
AB635 | 
AB636 | 
AB651 |
| 
AB657 | 
AB700 | 
AB701 | |





PRODUCT INFORMATION



PRODUCT INTRODUCTION

1.Ultra-large deepen block pattern and high strength carcass design.Specially for mining quarries, underground working loaders, and harsh working conditions, applies on steel slag, sand and stone pavement.

2.Unique structure and formula can effectively increases cutting resistance, recapping rate and improves anti-explosion ability.

L-5(AE801)

Size	Ply Rating	Pattern Code	Tread Depth (mm)	TT/TL	Standard Rim	Overall Dimension(mm)		Max Load(kg)		Max Pressure(kpa)	
						Section width	Overall Dia	10km/h	50km/h	10km/h	50km/h
23.5-25	40PR	L-5	70	TT/TL	19.50/2.5	595	1665	12500	8000	475	350



PRODUCT INTRODUCTION

1.Widen and thicken carcass design, improves loading capability and increases impact resistance. Widen driving surface and deep groove pattern block design, increases the wear resistance and improves its anti-puncture ability.

2.The staggered block pattern design greatly enhances the ground grip and wet skid resistance applies for wet slippery,muddy working conditions.

E-4/L-4(AE802)

Size	Ply Rating	Pattern Code	Tread Depth (mm)	TT/TL	Standard Rim	Overall Dimension(mm)		Max Load(kg)		Max Pressure(kpa)	
						Section width	Overall Dia	10km/h	50km/h	10km/h	50km/h
23.5-25	40PR	E-4/L-4	47.5	TT/TL	19.50/2.5	595	1660	12500	8000	475	350



PRODUCT INTRODUCTION

1.New transverse pattern, enhanced strong shoulder and widen driving surface structure design applies to loader and dozer for mining and construction road condition.

2.High strength carcass structure with special tread compound formula provides excellent anti-puncture,wear resistance,durable ability and recapping rate.

NewE-3/L-3(AE804)

Size	Ply Rating	Pattern Code	Tread Depth (mm)	TT/TL	Standard Rim	Overall Dimension(mm)		Max Load(kg)		Max Pressure(kpa)	
						Section width	Overall Dia	10km/h	50km/h	10km/h	50km/h
23.5-25	20PR	NewE-3/L-3	35	TT/TL	19.50/2.5	595	1615	12500	8000	475	350

PRODUCT INFORMATION



PRODUCT INTRODUCTION

1.Universal transverse pattern and widen driving surface structure design applies to loader and dozer working in mining and construction road condition.

2.High strength carcass structure with special tread compound formula provides excellent anti-puncture,wear resistance,durable ability and recapping rate.

E-3/L-3(AE803)

Size	Ply Rating	Pattern Code	Tread Depth (mm)	TT/TL	Standard Rim	Overall Dimension(mm)		Max Load(kg)		Max Pressure(kpa)	
						Section width	Overall Dia	10km/h	50km/h	10km/h	50km/h
26.5-25	32PR	E-3/L-3	35	TT/TL	22.00/3.0	675	1750	17000	11200	550	425
23.5-25	20PR	E-3/L-3	35	TT/TL	19.50/2.5	595	1615	12500	8000	475	350
20.5-25	20PR	E-3/L-3	28	TT/TL	17.00/2.0	595	1615	9500	6000	450	325
17.5-25	20PR	E-3/L-3	26	TT/TL	14.00/1.5	445	1350	8250	5000	575	400
20.5/70-16	14PR	E-3/L-3	19	TT	10.00E	365	950	/	1600	/	390



PRODUCT INTRODUCTION

1.Circumferential and transverse pattern design provide strong traction,stability,wet skid resistance and good self-cleaning property.

2.Mainly for loader, dozer and other construction vehicles working in hard and soft road conditions.

E-3/G-3(AE805)

Size	Ply Rating	Pattern Code	Tread Depth (mm)	TT/TL	Standard Rim	Overall Dimension(mm)		Max Load(kg)		Max Pressure(kpa)	
						Section width	Overall Dia	10km/h	50km/h	10km/h	50km/h
17.5-25	20PR	E-3/G-3	26	TT/TL	14.00/1.5	445	1350	8250	5000	575	400



PRODUCT INTRODUCTION

1.The buoyancy pattern with wide driving surface can not only increase the traction and buoyancy of the tire, but also have good compactness and shock absorption,

2.The tire is the first choice for the construction machinery of road leveling foundation and road roller.

E-7(AE806)

Size	Ply Rating	Pattern Code	Tread Depth (mm)	TT/TL	Standard Rim	Overall Dimension(mm)		Max Load(kg)		Max Pressure(kpa)	
						Section width	Overall Dia	10km/h	50km/h	10km/h	50km/h
23.1-26	16PR	E-7	17	TT/TL	DW20	595	1500	6150	5000	260	260



PRODUCT INFORMATION



PRODUCT INTRODUCTION

- 1.Universal transverse pattern and widen driving surface structure design applys to loader and dozer working in mining and construction road condition.
- 2.High strength carcass structure with special tread compound formula provides excellent anti-puncture,wear resistance,durable ability and recapping rate.

E-3/L-3(AE807)

Size	Ply Rating	Pattern Code	Tread Depth (mm)	TT/TL	Standard Rim	Overall Dimension(mm)		Max Load(kg)		Max Pressure(kpa)	
						Section width	Overall Dia	10km/h	50km/h	10km/h	50km/h
23.5-25	20PR	E-3/L-3	33	TT/TL	19.50/2.5	595	1615	10900	7300	375	300



PRODUCT INTRODUCTION

- 1.Circumferential and transverse pattern design provide strong traction,stability,wet skid resistance and good self-cleaning property.
- 2.Mainly for loader, dozer and other construction vehicles working in hard and soft road conditions.

E-3/L-3(AE808)

Size	Ply Rating	Pattern Code	Tread Depth (mm)	TT/TL	Standard Rim	Overall Dimension(mm)		Max Load(kg)		Max Pressure(kpa)	
						Section width	Overall Dia	10km/h	50km/h	10km/h	50km/h
23.5-25	20PR	E-3/L-3	33	TT/TL	19.50/2.5	595	1615	10900	7300	375	300



PRODUCT INTRODUCTION

- 1.Ultra-large deepen block pattern and high strength carcass design.Specially for mining quarries, underground working loaders, and harsh working conditions, applies on steel slag, sand and stone pavement.
- 2.Unique structure and formula can effectively increases cutting resistance, recapping rate and improves anti-explosion ability.

AE905

Size	Ply Rating	Pattern Code	Tread Depth (mm)	TT/TL	Standard Rim	Overall Dimension(mm)		Max Load(kg)		Max Pressure(kpa)	
						Section width	Overall Dia	10km/h	50km/h	10km/h	50km/h
23.5-25	40PR	/	50	TT/TL	19.50/2.5	595	1665	12500	8000	475	350

PRODUCT INFORMATION



PRODUCT INTRODUCTION

- 1.Strengthened carcass guarantee ultra performance in its load resistance and puncture resistance on various complex road conditions;
- 2.Service life outperform competitor products by over 20%;
- 3.Suitable for general mining sites and construction sites, like loaders, bulldozers and other tyre engineering maintenance purpose.

E-3/L-3(AE906)

Size	Ply Rating	Pattern Code	Tread Depth (mm)	TT/TL	Standard Rim	Overall Dimension(mm)		Max Load(kg)		Max Pressure(kpa)	
						Section width	Overall Dia	10km/h	50km/h	10km/h	50km/h
23.5-25	40PR	E-3/L-3	47	/	/	525	1590	/	/	/	/



PRODUCT INTRODUCTION

- 1.Deepened transverse pattern design and widened tread structure design secures tyre capacity in wear-resistance , stronger ground grip stability;
- 2.Low heat-generating ground-contacting rubber and mining-use tread formula is characterised by excellent puncture resistance, excellent tear resistance, low heat generation, chunking resistance, so as to restrain risks in tyre crown pierce and tyre shoulder burst under harsh working conditions.

E-3/L-3(AE907)

Size	Ply Rating	Pattern Code	Tread Depth (mm)	TT/TL	Standard Rim	Overall Dimension(mm)		Max Load(kg)		Max Pressure(kpa)	
						Section width	Overall Dia	10km/h	50km/h	10km/h	50km/h
23.5-25	40PR	E-3/L-3	50	/	/	525	1590	/	/	/	/



PRODUCT INTRODUCTION

- 1.Adopt a unique block pattern design, widen the driving surface design, deepen the pattern design, to ensure good grounding control performance and longer service life;
- 2.The crown adopts reinforced belt + explosion-proof, anti-strike design technology, thickened rubber at the bottom of the pattern and thickened shoulder side wall, which improves the product's anti-explosion, anti-puncture and side scratch performance on the road in industrial and mining areas.

E-3/L-3(AE908)

Size	Ply Rating	Pattern Code	Tread Depth (mm)	TT/TL	Standard Rim	Overall Dimension(mm)		Max Load(kg)		Max Pressure(kpa)	
						Section width	Overall Dia	10km/h	50km/h	10km/h	50km/h
23.5-25	40PR	E-3/L-3	58	/	/	525	1600	/	/	/	/



PRODUCT INFORMATION



PRODUCT INTRODUCTION

- 1.Designed for short-distance and heavy-duty use in industrial and mining, it can be used in steel mills, glass ceramic factories, mines and other scenes,Meet the harsh road conditions and mine operation needs;
- 2.Thickened explosion-proof ring reinforcement, wear resistance, puncture resistance and load performance are all excellent;

E-3/L-3(AE909)

Size	Ply Rating	Pattern Code	Tread Depth (mm)	TT/TL	Standard Rim	Overall Dimension(mm)		Max Load(kg)		Max Pressure(kpa)	
						Section width	Overall Dia	10km/h	50km/h	10km/h	50km/h
23.5-25	40PR	E-3/L-3	47	/	/	525	1600	/	/	/	/



PRODUCT INTRODUCTION

- 1.Universal transverse pattern and widen driving surface structure design applys to loader and dozer working in mining and construction road condition.
- 2.High strength carcass structure with special tread compound formula provides excellent anti-puncture,wear resistance,durable ability and recapping rate.

E-3/L-3(AE803)

Size	Ply Rating	Pattern Code	Tread Depth (mm)	TT/TL	Standard Rim	Overall Dimension(mm)		Max Load(kg)		Max Pressure(kpa)	
						Section width	Overall Dia	10km/h	50km/h	10km/h	50km/h
16/70-24	18PR	E-3/L-3	28	TT	13(SDC)	410	1120	6300	3870	550	450
16/70-20	18PR	E-3/L-3	28	TT	13(SDC)	410	1220	5800	3350	550	450
14/90-16	14PR	E-3/L-3	18	TT	16X8/6.5	295	920	/	1245	/	390



PRODUCT INTRODUCTION

- 1.New transverse pattern,strong shoulder, width driving surface, and high strength structure design are more suitable for loaders, dozers and heavy-duty dumper working in mining area and harsh conditions.
- 2.Special tread compound formula provides superb anti-puncture,wear resistance and crack resistance.

E-3(AE804)

Size	Ply Rating	Pattern Code	Tread Depth (mm)	TT/TL	Standard Rim	Overall Dimension(mm)		Max Load(kg)		Max Pressure(kpa)	
						Section width	Overall Dia	10km/h	50km/h	10km/h	50km/h
14.00-25	36PR	E-3	27	TT	10.00/1.5	375	1370	11400	6600	1125	850
13.00-25	32PR	E-3	26	TT	10.00/1.5	350	1300	9500	5125	1125	750

PRODUCT INFORMATION



PRODUCT INTRODUCTION

- 1.Circumferential and transverse pattern design provide strong traction,stability,wet skid resistance and good self-cleaning property.
- 2.Mainly for loader, dozer and other construction vehicles working in hard and soft road conditions.

E-3/L-3(AE805)

Size	Ply Rating	Pattern Code	Tread Depth (mm)	TT/TL	Standard Rim	Overall Dimension(mm)		Max Load(kg)		Max Pressure(kpa)	
						Section width	Overall Dia	10km/h	50km/h	10km/h	50km/h
20.5/70-16	14PR	E-3/L-3	17	TT	10.00E	365	950	/	1600	/	390



PRODUCT INTRODUCTION

- 1.Unique pattern design, widened driving surface design, special tread rubber formula, service life increased by more than 15%, suitable for small loaders.

AE830

Size	Ply Rating	Pattern Code	Tread Depth (mm)	TT/TL	Standard Rim	Overall Dimension(mm)		Max Load(kg)		Max Pressure(kpa)	
						Section width	Overall Dia	10km/h	50km/h	10km/h	50km/h
20.5/70-16	18PR	/	34	TT	8.5	326	854	2460	2460	420	420



PRODUCT INTRODUCTION

- 1.The design of cross-section width and driving surface width is widened, anti-skid stones optimize the design of pattern blocks, unique mine tread rubber formula, a special small loader tire designed for special roads.

AE838

Size	Ply Rating	Pattern Code	Tread Depth (mm)	TT/TL	Standard Rim	Overall Dimension(mm)		Max Load(kg)		Max Pressure(kpa)	
						Section width	Overall Dia	10km/h	50km/h	10km/h	50km/h
20.5/70-16	18PR	/	41	TT	8.5	328	920	2460	2460	420	420



PRODUCT INFORMATION



PRODUCT INTRODUCTION

- 1. Special tires for skid steer loaders, tractors, off-road forklifts, and aerial work platforms;
- 2. Unique pattern design, the pattern depth is deepened by 3mm, and the reinforced tire structure improves the wear resistance by more than 10%.

L-2(AL702)

Size	Ply Rating	Tread Depth (mm)	Standard Rim	Outer Diameter	Relevant Pressure(kpa)	Remarks
12-16.5	14PR	19.0	/	790	/	/
10-16.5	12PR	18.0	/	740	/	/



PRODUCT INTRODUCTION

- 1. Suitable for road rollers, suitable for compacting roadbed and asphalt pavement;
- 2. The driving surface is wide and flat, with good wear resistance and oil resistance.

C-1(AC601)

Size	Ply Rating	Tread Depth (mm)	Standard Rim	Outer Diameter	Relevant Pressure(kpa)	Remarks
13/80-20	16PR	/	/	1055	/	/
11.00-20	18PR	/	/	1070	/	/
9.75-18	16PR	/	/	970	/	/



PRODUCT INTRODUCTION

- 1.Scrapers and loaders suitable for underground and tunnel operations.

L-5S

Size	Ply Rating	Tread Depth (mm)	Standard Rim	Outer Diameter	Relevant Pressure(kpa)	Remarks
17.5-25	20PR	/	/	1382	/	/
10.00-20	16PR	/	/	1100	/	/
12.00-24	20PR	/	/	1275	/	/



BIAS TYRE



PRODUCT INFORMATION



PRODUCT INTRODUCTION

1.Pioneering domestic pattern to improve tire loading, gnawing and wearing resistance, suitable for steering wheels and driving wheels of commercial tractors and vehicles of field operation.

AB210

Size	Ply Rating	Tread Depth (mm)	Standard Rim	Overall Dimension(mm)		Max Load(kg)	Relevant Pressure (kpa)	Remarks
				Section width	Overall Dia			
6.00-14	12PR	31.5	4.50E	158	738	1000	630	
6.00-16	12PR	24.0	4.50E	150	680	450	250	



PRODUCT INTRODUCTION

1.Mixed pattern design, suitable for all kinds of roads, unique tread rubber formula with extremely high mileage.

AB311

Size	Ply Rating	Tread Depth (mm)	Standard Rim	Overall Dimension(mm)		Max Load(kg)	Relevant Pressure (kpa)	Remarks
				Section width	Overall Dia			
5.00-12	10PR	8.5	3.50B	143	568	465	400	ULT
4.50-12	8PR	8.5	3.50B	127	545	395	400	ULT



PRODUCT INTRODUCTION

1.Suitable for front steering wheels of tractors, with good ground gripping performance, wear resistance and anti-puncture.

AB2101

Size	Ply Rating	Tread Depth (mm)	Standard Rim	Overall Dimension(mm)		Max Load(kg)	Relevant Pressure (kpa)	Remarks
				Section width	Overall Dia			
4.00-14	6PR	9.0	3.00D	110	590	405	400	AG

PRODUCT INFORMATION



PRODUCT INTRODUCTION

- 1.Suitable for various pavement.
- 2.Excellent ground- grip and wear resistance.

AB411

Size	Ply Rating	Tread Depth (mm)	Standard Rim	Max Load(kg)	Relevant Pressure(kpa)	Remarks
4.50-14	8PR	9	3.00D	465	420	
4.50-16	10PR	9	3.00D	690	450	
5.00-14	10PR	9	3.00D	550	450	



PRODUCT INTRODUCTION

- 1.Reinforced tire carcass design.
- 2.Superb wear resistance and puncture resistance.

AB514

Size	Ply Rating	Tread Depth (mm)	Standard Rim	Max Load(kg)	Relevant Pressure(kpa)	Number of teeth	Remarks
6.00-12	8PR	31	4.50E	405	250	17	
6.00-16	10PR	32	4.50E	495	250	16	
7.50-16	10PR	33	5.50F	650	210	20	
7.50-16	10PR	33	5.50F	650	210	19	



PRODUCT INTRODUCTION

- 1.Suitable for tractors, tricycles, mining vehicles and wheel excavators in mud flats, mountainous areas and field working situation.
- 2.Superb wear resistance and anti-explosion, good stability.

AB521

Size	Ply Rating	Tread Depth (mm)	Standard Rim	Max Load(kg)	Relevant Pressure(kpa)	Number of teeth	Remarks
6.50-16	12PR	18.5	5.50F	735	450	30	
7.00-16	14PR	18.5	5.50F	735	420	32	
7.50-16	14PR	18.5	5.50F	870	370	32	
8.25-16	16PR	18.5	5.50F	1245	390	32	



PRODUCT INFORMATION

PRODUCT INFORMATION



PRODUCT INTRODUCTION

1.6.00-12 Applicable to steer wheel of tractor which can provide superior stability.
2.Other sizes tires with great ground-grip can be used for mining, mountain area, beach and muddy working condition.

AB522

Size	Ply Rating	Tread Depth (mm)	Standard Rim	Max Load(kg)	Relevant Pressure(kpa)	Number of teeth	Remarks
6.00-12	8PR	22	4.50E	405	250	32	
6.50-12	14PR	23	4.50E	450	250	32	
6.00-16	10PR	22	4.50E	495	250	34	
6.50-16	12PR	18.5	5.50F	735	420	30	
7.50-16	12PR	18.5	5.50F	870	370	32	



PRODUCT INTRODUCTION

1.Applicable to mountainous areas, mining areas and short-distance ordinary roads.
2.Good grip and high anti-cracking performance.

AB612

Size	Ply Rating	Tread Depth (mm)	Standard Rim	Max Load(kg)	Relevant Pressure(kpa)	Remarks
6.50-16	12PR	19	5.50F	S975/D860	530	
7.00-16	16PR	19	5.50F	S1220/D1075	630	
7.50-16	16PR	19	6.00D	S1405/D1240	630	
8.25-16	16PR	24	6.50H	S1705/D1500	630	



PRODUCT INTRODUCTION

1.Suitable for steering wheels and driving wheels of tractors and tillage machines of various specifications, and durable with no segments falling.

AB533

Size	Ply Rating	Tread Depth (mm)	Standard Rim	Overall Dimension(mm)		Max Load(kg)	Relevant Pressure (kpa)	Remarks
				Section width	Overall Dia			
5.00-12	8PR	22.0	4.00E	145	590	495	250	AG
6.00-12	12PR	31.0	4.50E	145	640	495	250	AG
6.50-12	12PR	32.3	4.50E	145	640	550	300	AG
6.00-16	12PR	32.0	4.50E	180	745	495	250	AG
7.50-20	12PR	33.0	5.50F	221	934	915	280	AG
8.3-20	12PR	33.0	W7	210	950	696	270	AG
8.3-24	12PR	32.0	W7	210	1050	815	250	AG
9.5-20	12PR	36.0	W8	240	1050	960	260	AG
9.5-24	12PR	36.3	W8	250	1100	940	320	AG
11.2-24	12PR	35.0	W10	310	1150	1225	240	AG



PRODUCT INTRODUCTION

1.Suitable for mountain or mining areas, as well as ordinary road at low speed.
2.Excellent wear resistance, loading ability and ground grip.

AB614

Size	Ply Rating	Tread Depth (mm)	Standard Rim	Max Load(kg)	Relevant Pressure(kpa)	Remarks
6.50-16	12PR	18.5	5.50F	S975/D860	530	
7.00-16	16PR	18.5	5.50F	S1220/D1075	630	
7.50-16	16PR	18.5	6.00D	S1405/D1240	630	
8.25-16	16PR	18.5	6.50H	S1705/D1500	630	



PRODUCT INTRODUCTION

1.Superb wear resistance and puncture resistance.
2.Suitable for all wheel position on ordinary road.

AB635

Size	Ply Rating	Tread Depth (mm)	Standard Rim	Max Load(kg)	Relevant Pressure(kpa)	Remarks
6.50-16	12PR	12	5.50F	S975/D860	530	LT
7.00-16	16PR	13	5.50F	S1220/D1075	630	LT
7.50-16	16PR	13	6.00G	S1405/D1240	630	LT
8.25-16	16PR	14	6.50H	S1705/D1500	630	LT



PRODUCT INFORMATION

PRODUCT INFORMATION



PRODUCT INTRODUCTION

- 1.Unique pattern design enhances anti-cracking performance and heat dissipation.
- 2.Reinforced tire structure improves anti-blowout and anti-puncture performance.
- 3.Suitable for bad pavement and ordinary road at medium or low speed.

AB616

Size	Ply Rating	Tread Depth (mm)	Standard Rim	Max Load(kg)	Relevant Pressure(kpa)	Remarks
4.50-12	8PR	12	3.00B	S412/D400	400	
5.00-12	10PR	12	3.50B	S560/D530	500	
5.00-14	10PR	15	3.00D	550	450	
5.50-13	10PR	16	4.00B	S560/D500	420	
6.00-13	10PR	16	4.00E	S655/D570	420	
6.00-14	10PR	16	4½J	S685/D600	420	
6.00-15	10PR	17	4.50E	S720/D630	420	
6.50-16	10PR	16	4.50E	S860/D755	530	
6.50-15	12PR	16	4.50E	S820/D720	420	
6.50-16	14PR	19	5.50F	S975/D860	530	
7.00-16	16PR	19	5.50F	S1220/D1075	630	
7.50-16	16PR	19	6.00G	S1405/D1240	630	
8.25-16	16PR	19	6.50H	S1705/D1500	630	
9.00-16	16PR	19	6.50H	S1955/D1720	630	



PRODUCT INTRODUCTION

- 1.Suitable various road.
- 2.Excellent loading capability and wear resistance and anti-puncture performance.
- 3.Flattening design Lowers fuel consumption and improves retread rate.

AB636

Size	Ply Rating	Tread Depth (mm)	Standard Rim	Max Load(kg)	Relevant Pressure(kpa)	Remarks
4.00-12	6PR	8	3.00D	330	360	
4.00-14	6PR	8.5	4.00D	350	390	
5.50-16	10PR	9	3.00D	690	450	
5.50-13	8PR	10	4.00B	S560/D500	420	
5.50-16	10PR	9	4.00E	990	490	
6.00-12	8PR	16	4.50E	405	250	
6.00-13	10PR	10	4.00B	S655/D570	420	
6.00-14	10PR	10.5	4½J	S685/D600	420	
6.00-15	10PR	11	4.50E	S720/D630	420	
6.00-16	10PR	11	4.50E	S860/D690	530	
6.50-14	10PR	11.5	4½J	S785/D690	420	
6.50-15	10PR	11.5	4.50E	S820/D720	420	
6.50-16	10PR	12.5	5.50F	S975/D860	530	LT
7.00-16	16PR	13	5.50F	S1220/D1075	630	LT
7.50-16	16PR	13.5	6.00G	S1405/D1240	630	LT
8.25-16	18PR	14	6.50H	S1705/D1500	630	LT
9.00-16	18PR	16	6.50H	S1955/D1720	630	



PRODUCT INTRODUCTION

- 1.Superb wear resistance and puncture resistance .
- 2.Suitable for all position wheels on bad road and low speed ordinary road.

AB618/AB658

Size	Ply Rating	Tread Depth (mm)	Standard Rim	Max Load(kg)	Relevant Pressure(kpa)	Remarks
4.50-12	8PR	12	3.00B	S412/D400	400	
5.00-12	10PR	12	3.50B	S560/D530	500	
6.00-13	10PR	16	4.00E	S655/D570	420	
6.00-14	10PR	16	4½J	S685/D600	420	
6.00-15	10PR	16	4.50E	S720/D630	420	
6.50-16	14PR	19/24	5.50E	S975/D860	530	
7.00-16	16PR	19/24	5.50F	S1220/D1075	630	
7.50-16	16PR	19/24	6.00G	S1405/D1240	630	
8.25-15	16PR	19/24	6.50H	S1705/D1500	630	
9.00-16	16PR	24	6.50H	S1955/D1720	630	



PRODUCT INTRODUCTION

- 1.Suitable for mountainous areas, hills and ordinary roads at medium -low speed.
- 2.Excellent wear resistance and anti-puncture performance.

AB651

Size	Ply Rating	Tread Depth (mm)	Standard Rim	Max Load(kg)	Relevant Pressure(kpa)	Remarks
6.50-16	12PR	16	5.50F	S975/D860	530	
7.00-16	16PR	16	5.50F	S1220/D1075	630	
7.50-16	16PR	16	6.00G	S1405/D1240	630	
8.25-16	16PR	16	6.50H	S1705/D1500	630	



PRODUCT INFORMATION

PRODUCT INFORMATION



PRODUCT INTRODUCTION

1.Excellent wear resistance, overloading capability and stability.

AB700

Size	Ply Rating	Tread Depth (mm)	Standard Rim	Overall Dimension(mm)		Max Load(kg)	Relevant Pressure(kpa)	Remarks
				Section width	Overall Dia			
5.00-8	10PR	12	3.50D	137	470	1150	1000	
18×7-8	14PR	16	4.33R	173	465	1440	900	
6.00-9	12PR	14	4.00E	160	540	1675	1030	
7.00-9	10PR	14	5.00S	190	590	1995	860	
6.50-10	12PR	14	5.00F	190	590	1860	970	
7.00-12	12PR	16	5.00S	190	676	2375	860	
8.25-12	12PR	18	6.50	235	765	3060	720	
8.25-15	14PR	19	6.50	235	840	3775	830	
28×9-15	16PR	18	7.00	220	710	3115	1000	



PRODUCT INTRODUCTION

1.It is suitable for the front guide wheel of tractor, with good grip performance, wear resistance and puncture resistance.

AB657

Size	Ply Rating	Tread Depth (mm)	Standard Rim	Overall Dimension(mm)		Max Load(kg)	Relevant Pressure (kpa)	Remarks
				Section width	Overall Dia			
8.25-16	16PR	23.7	6.50DD	235	855	1850	730/2120	ID



PRODUCT INTRODUCTION

1.The pattern design is 2-5mm higher than ordinary tyres, more affordable; the unique tread rubber formula provides good wear resistance and heat dissipation; suitable for medium and low speed steering wheels and driving wheels, not suitable for extremely heavy loads.

AB631

Size	Ply Rating	Tread Depth (mm)	Standard Rim	Overall Dimension(mm)		Max Load(kg)	Relevant Pressure (kpa)	Remarks
				Section width	Overall Dia			
7.50-16	16PR	14.5	6.00G	215	805	1320	770	LT
7.00-16	16PR	13.5	5.50F	200	775	965	630	LT
6.50-16	12PR	13.5	5.50F	185	750	860	530	LT
7.00-15	12PR	12.0	5.50F	200	750	1080	630	AG
6.00-15	10PR	11.0	4.50E	180	705	630	420	AG
6.00-14	10PR	11.0	4½J	170	680	600	420	AG
6.50-14	10PR	11.5	4½J	530	690	690	530	AG
6.00-13	10PR	10.0	4.00E	170	655	580	420	AG
5.00-14	10PR	8.5	3.00D	130	640	600	500	AG
4.50-14	8PR	8.5	3.00D	120	615	500	450	AG
5.00-12	10PR	8.0	3.50B	143	568	530/560	500	ULT
4.50-12	8PR	8.5	3.00B	127	545	400/412	400	ULT



PRODUCT INTRODUCTION

1. The unique tread compound formula and super strong carcass design are especially suitable for the use of forklift tires in industrial and mining enterprises in special and harsh environments;
2. The first company in the country to deepen the pattern design The depth of the pattern reaches 39.5mm, which is more than double the depth of general industrial forklift tires, and is super wear-resistant and puncture-resistant.

AB701

Size	Ply Rating	Tread Depth (mm)	Standard Rim	Overall Dimension(mm)		Max Load(kg)	Relevant Pressure (kpa)	Remarks
				Section width	Overall Dia			
6.50-10	12PR	38	/	/	600	/	/	/
28×9-15	16PR	33	/	/	700	/	/	/
8.25-15	16PR	38.5	/	/	865	/	/	/
7.00-12	14PR	37.5	/	/	690	/	/	/



COMPANY HISTORY

COMPANY HISTORY



The company settled in Yangxin County Economic Development Zone in April 2012, with a total investment of 2 billion RMB.

2000

Hubei Aulice Tyre Co., Ltd., Formerly known as Wuhan Aulice Tyre Co., Ltd., which was established in 2000.

2012



2013

Aulice certified by national quality management system "CCC" in Oct 2013.



2014

Passed American quality management system certification "DOT" in Aug 2014.

In 2015, passed "GCC", issued by Cooperation Council for the Arab States of the Gulf in Jan and "ISO9001:2000" in June.

With the establishing of its footprint across the global, Aulice's operating income reached 146.23 million RMB in 2015.

2015



2016

In 2016 awarded "high-tech enterprise" by Huangshi Technical Supervision Bureau.



2017

In 2017 was selected as "gold seed" reserve listed enterprises in Hubei Province, at the same time the Department of Foreign Trade officially operated.



2018

In 2018, the production output reached 1.5 million pieces and the sales volume reached to 1.456 Million pieces, the sales amounted to more than 1.4 Billion RMB, and the taxes paid amounted to 59.79 Million RMB.

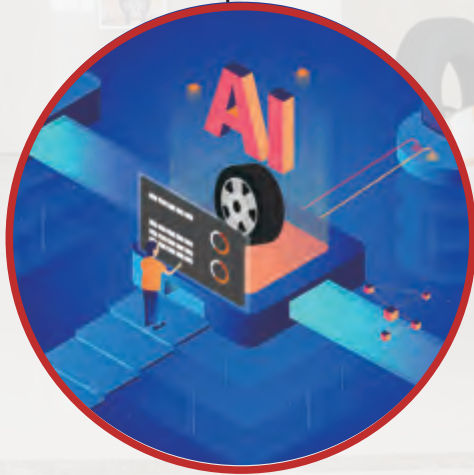


2019

As of March 2019, the company's independent production of the many main brands ", Aulice, Vanlustone, santian, Jiasibao, and Qunying" and 94 sizes, 67 kinds of patterns, 17 R & D patents, 30 registered trademarks. On the same year.Aulice expanded a new TBR production line and OTR production line, which create 300 thousands TBR tire and 150 thousands OTR tires per year.

In Nov 2019, Aulice invest another new plant Hubei Jiashun Tire Co., Ltd in Xianning city which will bring 3 million sets of high-performance all-steel radial tire.

Set up the Internet technology team in September 2019, predominantly dedicated to the development of online B2B and B2C platforms. Simultaneously, dawning involved in big data collection, AI intelligent algorithms, which will greatly improve the user experience, help users to scientifically use tires and assist to develop new products concurrently. It will make Aulice become more smarter and more intelligent.



2020



In the future

Aulice plans to be listed on the board in Shenzhen Stock Exchange within 2023. Now Aulice is preparing the relevant materials of IPO to the CSRC, and accomplish it by the end of 2023.

In the future Aulice will strive to become the No.1 intelligent tire manufacturer with its internet+ concept of mega data technology and AI solution.



USING & MAINTENANCE OF OTR TYRES

USING & MAINTENANCE OF OTR TYRES

STORAGE OF TYRE

- 1.Tyres should be stored in good ventilated warehouse and kept from direct sunlight.The temperature in the warehouse should be controlled between -10°C~+30C,and the relative humidity should be between 50%and 80%.The warehouse should be 1 meter from heat source,generating equipment and other ozone-generating place.
- 2. It is not allowed to place tyres together with oils,inflammable objects,acids and chemical objects.
- 3. To store the inner tube and inflate slight,meanwhile daub talcum powder on the surface.hung on half-circu- lar shelves and the tyres should be changed regularly the pivot point at least once two months.It is not allowed to fold and pile them.To store the flaps specifically,it should be placed on circular wooden shelves.
- 4.Tyres should be stored according to production date or store date,first in and first out.Meanwhile,they should have store card to record the type,specification,structure,ply rating,brand,production date and store date.
- 5. Wrapped tyres should be stored with packages.

ASSEMBLING AND DISASSEMBLING OF TYRE

- 1.Tyres should be fixed on corresponding rims of stipulating in regulation.
- 2.The same axle should be assembled with tyres of the same specifications,structure,brands,size,ply rating and patterns.
- 3.When fitting tyres which have specified running direction,the running direction should be the same with the running direction of the wheel.
- 4.All tyres of vehicles or the same axle should be replaced when replacing with new ones.
- 5.When assembling or disassembling the tube tyres,it should use the special tools.
- 6.When tubes are placed into tyres,the dirt should be cleaned from the internal of the tyres and the surface of tube,and apply some talc powder on the surface of the inner tube for their extent.The position of internal tube valve and rim valves should be kept together.
- 7.Assembly and disassembly to tubeless tyres
 - (1) Before amount tyres,rim should be checked firstly to make sure no deformation and crack.If there are some problems.rim should be repaired or replaced.The rust and other things should be cleaned from the surface of rim and tyres bead and"O-ring"groove before amounting tyres.
 - (2) When dismounting or mounting tyres with O-ring rims,need to make replacement with new O-ring.Before installing tyres,check if O-rings have defects and smear lubricant on the surface of O-ring.
 - (3) The bead disassembly machine and the tyre assembly device should be used before mount or dismount tyres.It is not allowed to jimmy and pound forcefully in order to avolding damage the casing and the inner-liner around the bead.For the convenience of mounting tyres,it is advisable apply neutral soap liquid or special antifriction on bottom of bead and the rim bead seat.It is not allowed to use any antifriction that can influence the quality of tyres.

LOAD OF TYRE

- 1.The load of tyres should be match the current national standard.The actual load should be below or equal to the maximum load in the international standard regulation.
- 2.The goods loaded by vehicle should be placed equably in order to avoid one tyre takes too much load.

USING PRESSURE OF TYRE

- 1.The using pressure of tyre should be match the current national standard.
- 2.After mounting tyres,firstly inner tube should be inflated slightly to make sure it can extend,then kept inflating till the pressure meets the regulation.
- 3.It is necessary to inspect if there is a leakage in the place of the valve pad and the valve core,contact area between the rim and tyre bead after inflating the tyre.
- 4.The tolerance scope of the using pressure:±30 kPa.
- 5.Check air pressure at fixed time everyday,when finding air pressure reduction,add to the standard air pres- sure in time.

USE OF OTR TYRES ON THE ROAD

OTR tyre is not designed for working on the road.When OTR tyre run on road in order to deliver vehicle for shifting work place,protective measures must be taken.Otherwise tyre will be easily subject to separation and bulge because of the excessive heating generated.So when any engineering vehicles run on the road,please take measures as follows:

- 1.Load and Pressure**
 - ①The vehicle must be empty when running.
 - ②To check and adjust the inflation pressure by the regulation each day before shifting work.According to tech- nology parameters table you can be find the specific inflation pressure.
 - ③The tyre shall not deflate on the road,and the increase of the air pressure is normal when working.
- 2.Speed**
 - (1) Regular pattern tyre(E-3/L-3)
 - ①Maximum speed on the road:normal section tyres should be below 50km/h,and wide base tyres should be below 30km/h.
 - ②There should be 30 minutes stop after running 80km or 2hours(choose the first arrivals).
 - ③ There should be at least 1 hour parking after running 4 hours.
 - ④ Normal section tyres and wide base tyres are mlixed assemble on a car,follow the regulation of the wide base tyres.
 - (2) Deen tread pattern tyres(E4/L4)and special compound tyres are not allowed to drive on the road unless Aeolus factory R&D department agree.
 - (3) Extra deep tread pattern tyres on vehicle,(L5)in any case are not allowed to run a long distance on the road.